



CORPORATE PRESENTATION

2024

***""Alone we go faster,
together we go further."***

Jean Lengo Dia-Ndinga,
Founder and Chairman of the Ledyo Group



GROUPE LEDYA

JEAN LENGU DIA-NDINGA, FOUNDER AND CHAIRMAN AND GLEND MAKABI, VICE-CHAIRMAN

A FAMILY-OWNED INDUSTRIAL GROUP
A LONG-TERM STRATEGY



WWW.GROUPELEDYA.COM

GROUPE LEDYA

FOR EVER MORE DYNAMIC ENTREPRENEURSHIP

The Ledy Group comprises 18 companies active in logistics, ports, hydrocarbons, mining, agri-food, general trade and real estate.

These companies have emerged from the vertical integration of services, thanks to the vision and courage of Congolese industrialist Jean Lengo Dia-Ndinga.

LEDYA GROUP

OUR PARENT COMPANY, A FAMILY-OWNED GROUP



Founded in 1972, the Ledy Group is one of the largest companies in the Democratic Republic of Congo. Led from the outset by its founder, **Jean Lengo Dia-Ndinga**, and assisted in recent years by one of his sons, **Glend Lengo-Makabi**, as Vice-Chairman of the Ledy Group.

The Ledy Group is a listed company, majority owned and controlled by the Lengo family. The Ledy Group has always stood out for its pioneering strategy.

It holds strong positions in its seven industrial sectors: ports and logistics, hydrocarbons, mining, mining concessions, general trade and agribusiness.

The Group's stable shareholder structure enables it to adopt an ambitious, long-term investment strategy.

Company History



1972

Legal creation of "Maison Ledy" Establishment

- Air travel to Belgium, Holland and France
- Travel by boat to Fabiola-ville or Kananga-ville to benefit from 300 kg freight allowance

Références : Delhaize, Colruyt, Ami, Maconel, Scooter, Domex



1973

Imports and general trade

- Cosmetic products
- Plastic utensils for children
- Upholstery
- Small and large household appliances
- Haberdashery
- Paper towels for wiping and hygiene



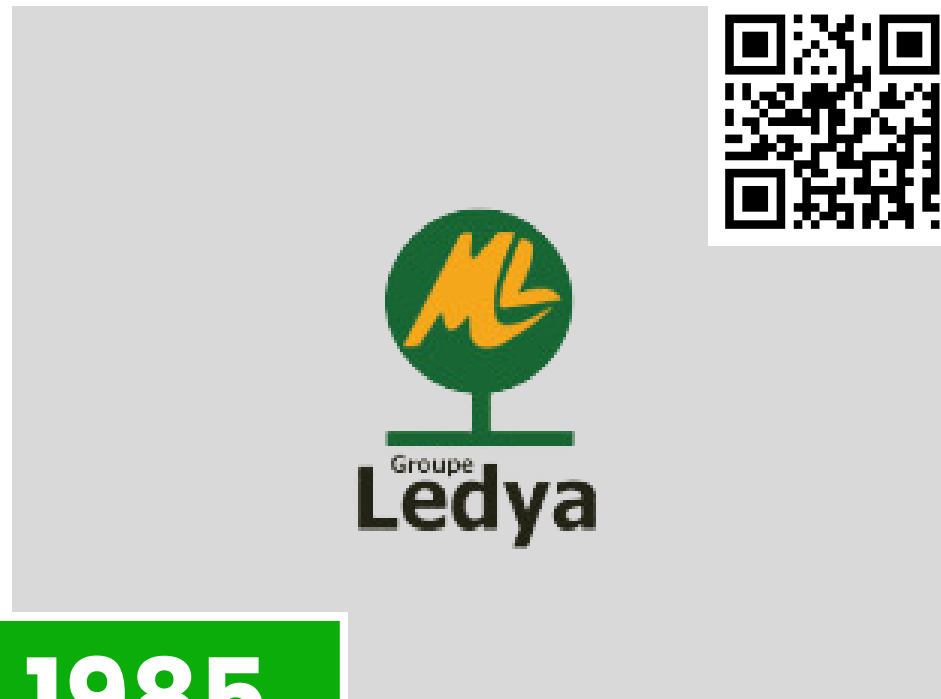
1975

Legal change and creation of Ledy SARL

- Wholesale supplier to Kinshasa supermarkets
- Supplier of foodstuffs to the capital's markets (rice, corn, beans, salt, iodine)
- Construction of cold stores and cold rooms for containers of frozen foodstuffs from Belgium

*The company charters ships to transport frozen horse mackerel from Namibia and Mauritania. It also imports various products from Belgium, including Pulvera hens, Wilki brand products and butchery items.

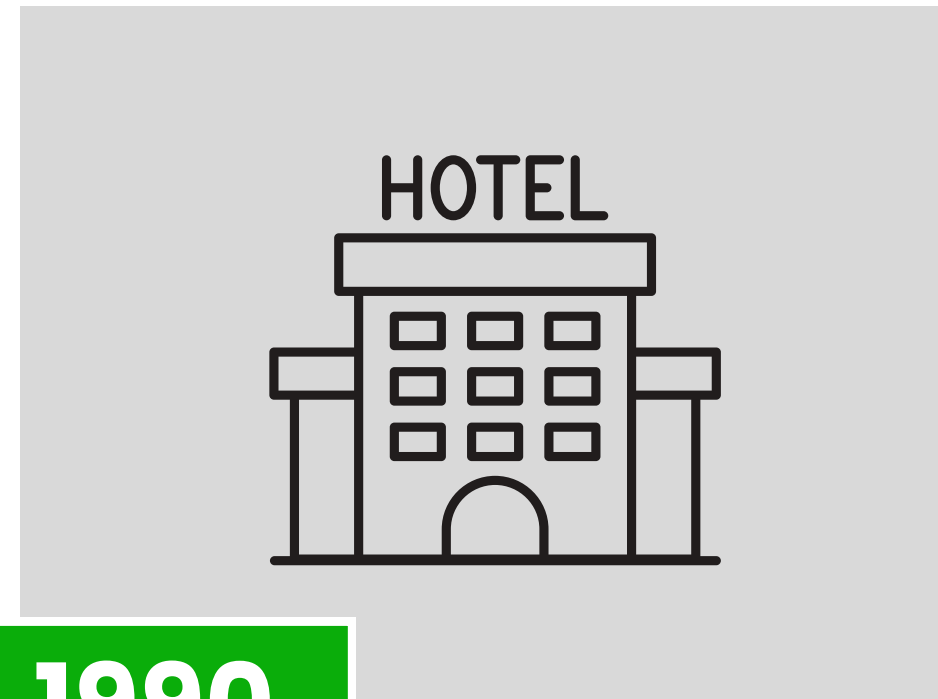
Company History



1985

BIRTH OF LEDYA GROUP

- General trade
- Semi-industrial bakeries



1990

VERTICAL INTEGRATION OF SERVICES

- Construction of real estate properties
- Land acquisition
- Property management
- Ledyya hotel services
- Truck transport services in semi-trailers from TICOM
- Customs brokerage services from AIDEL
- Gravel quarry with drilling and blasting (SOGECAR)



2005

MINING CONCESSIONS

- Kongo-Central: Ownership of manganese and limestone mining concessions.
- Haut-Katanga and Lualaba: Ownership of copper and cobalt mining concessions.

Company History



2006

SURESTREAM RDC S.A.

SURESTREAM RDC SA is a Congolese oil and gas exploration and production company, one of the subsidiaries of LOG EP SA of the LEDYA GROUP.

It is registered with the Registre de Commerce et de crédit mobilier under no. CD/KNM/RCCM/21-B-00123, with the Identification Nationale under no. N70226G, tax number A0706875G.



2012

PETROLEUM INDUSTRY

- Birth of LEREXCOM PETROLEUM Ledy a for research, exploitation and marketing of petroleum products
- **Oil midway:** logistics for tanker reception, product storage, inland transport, oil port for Brazzaville and Bangui and urban distribution to service stations in the Democratic Republic of Congo.



2014

PORT ACTIVITIES

- Rehabilitation of SOCOPE port
- Construction of TICOM dry port
- Investment contribution to MGT port
- Rehabilitation of LEREXCOM PETROLEUM's oil port in Ango-Ango
- Construction of Lerexcom Petroleum's Maluku oil quay

MORE

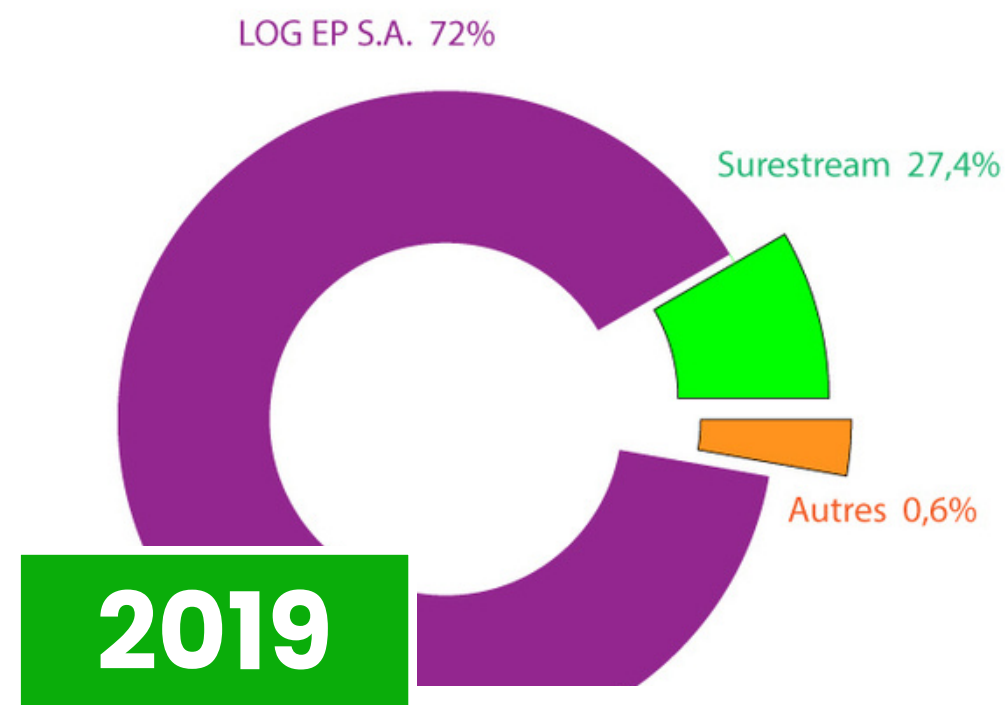
Company History



2017

BIRTH OF LOG DS

Downstream petroleum: 12 service stations in operation in Kinshasa and petroleum product imports



2019

SURESTREAM RDC S.A. SHAREHOLDERS

Sale by Surestream Petroleum Ltd of 72% of shares in its subsidiary Surestream RDC SA to Ledy Oil & Gas EP SA, LOG EP SA.

LEDYA OIL & GAS EP SA (LOG EP) SA : 72% OF SHARE CAPITAL
 SURESTREAM PETROLEUM LTD (SP LTD): 27.4
 OTHER SHAREHOLDERS: 0.6

2023



THE LEDYA GROUP LOGO EVOLVES

The logo retains the original identity created by group founder Jean Lengo Dia-Ndinga.

The tree, associated with growth, stability and respect for the environment, represents LEDYA GROUP's core values of boldness, growth and strength. The orange color symbolizes the abundance of fruit and reflects the diversity of successful businesses within the conglomerate.

MORE

Company History



MINING CONCESSIONS



2023

The PE NIOKA exploratory mine site in Kolwezi hosts a world-renowned deposit. Pre-feasibility studies should be completed by January 2024.

The next step will be to enter the production phase, requiring processes such as leaching and solvent extraction to obtain copper cathodes and cobalt hydroxide. These steps mark a major evolution in the exploitation of the mineral resources present on this site.

MORE

Corporate Values

1100 EMPLOYEES

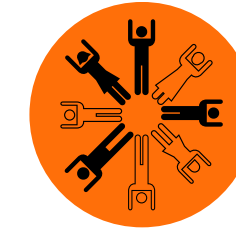
90% permanent contracts

41 YEARS OLD AVERAGE AGE



Audacity

We're willing to take calculated risks, innovate and push the boundaries.



Diversity

Our commitment to recognizing, promoting and celebrating the plurality of individuals within the organization. Beyond visible differences such as ethnic origin, gender, age, or physical ability, to also include a diversity of perspectives, ideas, experiences, and skills.



Growth

We strive for constant progress to remain competitive in the marketplace. Our growth is achieved in a responsible and ethical manner, taking into account the impact on stakeholders, society and the environment.

OUR ETHICAL COMMITMENT



"Ethics is everyone's business".

The LEDYA GROUP's success depends on the men and women who uphold our values. They are at the heart of our ethics. We conduct our activities with respect for our stakeholders and international rules, so that we can move forward together in a sustainable way.

Our ethics define who we are and are reflected in our actions:

- We respect human rights.
- We fight corruption.
- We guarantee a working environment free from physical and psychological threats.
- We respect the rules of free competition.
- We respect international sanctions.
- We limit and control our impact on the environment.
- We provide equal opportunities for all.



THESE RULES APPLY TO ALL LEDYA GROUP EMPLOYEES AS WELL AS TO OUR BUSINESS PARTNERS WORLDWIDE.

Organization chart Of the Company



Jean Lengo Dia-Ndinga
Founder and Chairman



Raissa Mashala
Executive Assistant



Glend Makabi
Vice-Chairman



Claude Bossio
Chief of Staff



Michael Lengo
Chief Financial Officer



Perpetue Lengo
Human Resources Director



Jean-Claude Lengo
Business Analyst and Assistant to the CFO



Ali Mamina
Business Developer

Our companies



HYDROCARBONS

LEREXCOM PETROLEUM

2 oil terminals in Matadi and Maluku

- Storage
- Transport
- Oil port
- Distribution



SURESTREAM RDC

Exploration in the Muanda coastal basin by SURESTREAM RDC



LEREXCOM MINING

Mining operations in copper and cobalt concessions in Haut Katanga and Lualaba
Explored mining asset in Kolwezi, PE NIOKA, with world-class Type deposit.



LOG DS

Ledya Oil and Gas Distribution & Services
12 service stations in Kinshasa with fuels, lubricants, LPG



INDUSTRIES

OUR PARTNERS



Our companies

MINING

CMT



COMPAGNIE MINIERE DE TONDO (CMT S.A.S.) in Kolwezi and Tondo, Lualaba Province.

CMT owns mining perimeters and is currently exploring PE 14531 at Nyoka near Kolwezi.

This project is the major project of CMT, which owns 100% of the PE 14051 permit and has been conducting exploration work since 2017.

SOGECAR



Company that manages the quarry located on Mimosa Island, in Kinshasa's Ngaliema commune.

SOGECAR produces rubble, gravel and sand.

SOCOPPE



Société Congolaise de Pêche is the company created by the partnership between GROUPE LEDYA, the Congolese state and private investors to operate the port of Ango-Ango, and deep-sea fishing. GROUPE LEDYA holds 70% of the shares.

Our companies



AGRO-BUSINESS



LEDITAC PLANTATION

Mechanized farming with 15 farm tractors, combine harvesters, ploughs, seeders, workers' camp with 50 houses, and management of the 3,000 hectares of plantations at Kingambuini, in the Plateau des Batéké, for vegetable production of corn, cassava, beans, cowpeas, vegetable gardens and orchards.

LEDITAC EXFOR

Logging of 235,000 hectares with **LEDITAC EXFOR** (Equateur province)
- wenge, afromosia, sifo, lifaki species

LEDITAC

Production and marketing company.
Supplier of farming equipment.

LEDITAC COLOR

Four-color printing plant dedicated to the production of high-quality visual media such as magazines, saddle-stitched catalogs, posters and flyers.

LEDITAC SCIERIE

Industrial sawmill in Limete, Kinshasa

INDUSTRIES

Our compa



LEDYA HOTEL

Hotel chain comprising 4 LEDYA GROUP establishments offering accommodation services and additional facilities such as catering, conference centers and spa services.

SIMOBILE

- Construction of real estate properties
- Acquisition of real estate properties
- Management of LEDYA GROUP real estate properties



Key figures For the consortium



1975

SALES FIGURES



2023

KEY FIGURES

HEAD OFFICE

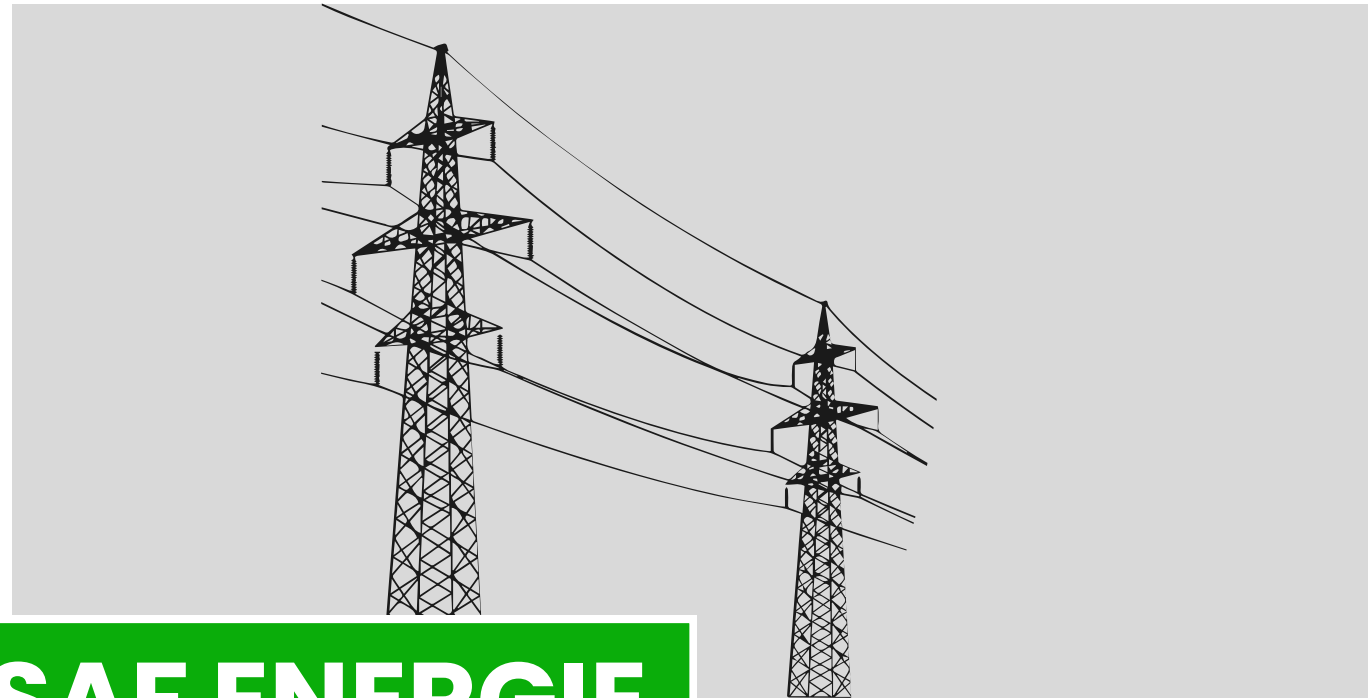


LEDYA GROUP BUILDING

17 Avenue des Forgerons - 2nd floor
Quartier Funa
Commune de Limete
Kinshasa
République démocratique du Congo (RDC)



Upcoming Projects



SAF ENERGIE

Participation in power generation



EXPANSION

Expansion of LOG DS service stations nationwide.

Further Information

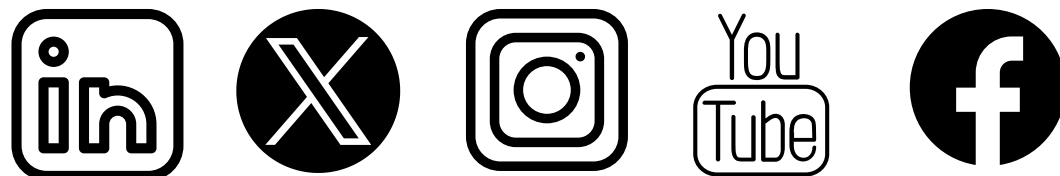


(+243) 820 319 677

@groupeledya

www.groupeledya.com

contact@groupeledya.com



THANK YOU



www.groupeledya.com